

# RAIL CLUSTER FOR SOUTH-EAST EUROPE (RCSEE)



RAIL CLUSTER FOR SOUTH-EAST EUROPE

*Together for faster implementation of innovation  
and modernization in railway sector on national  
and regional level in Southeast Europe*



## Mission and vision

Railway Cluster for Southeast Europe (RCSEE) is a regional platform for networking and cooperation between private corporate sector, national railways, science and technical institutes and education institutions in rolling stock and railway technique sector. RCSEE seeks to significantly contribute to the implementation of innovation and modernization policy in railway sector on national and regional level in Southeast Europe, with special attention to intensifying the national and international cooperation.

## Basic strategic goals of RCSEE are:

- Modernization and personnel professionalization in regional railway system;
- Harmonization of railway standards in the Southeast Europe;
- Increase of productivity and competitiveness on the global market;
- Introduction of innovative technology in regional railways;
- Increased transparency in reorganization and modernization processes;
- Commercialization of products, services and innovations of cluster members;
- Synchronization of legislation with the EU;
- Development of public-private partnership in the railway sector in the region.

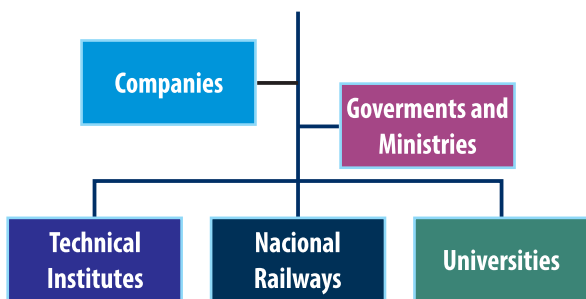




---

## Vision:

RCSEE strives to be a leading regional platform for cooperation and networking in railway sector.



## What are our concrete activities:

- We present a platform for corporate networking and B2B;
- We promote all members and their image in the region and on the international level;
- We promote better cooperation and transfer of knowledge between industry and schools;
- We organize special events, conferences, workshops and meetings;
- We promote innovative technology and educational potential of our members;
- We positively promote railway sector in public;
- We network members with other European railway clusters;
- We offer a number of professional services to members at very competitive prices.



## RCSEE Structure

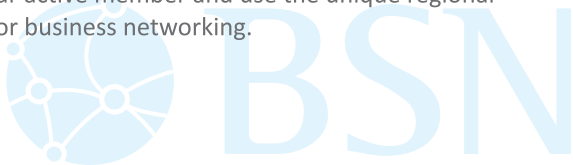


## Revitalization of Railway in West Balkans

In the upcoming ten years, through investment projects, national railways and international funds, up to 10 billion EUR will be invested in technical-technological revitalization of railways and railway infrastructure.

This is a large development chance for the economy of the region, but also for more than 1,000 companies in the railway sector active in the markets, employing over 40,000 people.

Become our active member and use the unique regional platform for business networking.



# RAIL CLUSTER FOR SOUTH-EAST EUROPE (RCSEE)

## CONTACT:



RAIL CLUSTER FOR SOUTH-EAST EUROPE



## BUSINESS SUPPORT NETWORK (BSN)

RAIL CLUSTER FOR SOUTH-EAST EUROPE (RCSEE)

100 Strumička st.

11050 Belgrade

Republic of Serbia

phone: +381.11.3472.133

mobile: +381.64.199.9981

e-mail: [welcome@rcsee.org](mailto:welcome@rcsee.org)

web: [www.rcsee.org](http://www.rcsee.org)



**Milan Vučković**  
Director RCSEE



**Dragoljub Rajić**  
Coordinator & PR



**Marko Radović**  
Marketing & IT

## BECOME OUR MEMBER

*Become our member and use numerous possibilities and benefits in the Cluster:*

Current membership fees:

|   |            |
|---|------------|
| Individual members                              | 50,00 Eur  |
| Educational institutions                        | 100,00 Eur |
| Companies up to 50 employees                    | 150,00 Eur |
| SMEs and institutes up to 50 employees          | 200,00 Eur |
| Institutes and organizations over 100 employees | 300,00 Eur |
| Companies with 100 to 400 employees             | 300,00 Eur |
| Companies with over 400 employees               | 500,00 Eur |

*Send us an e-mail with a request to become a member!*

**We work,  
in Your interest,  
without burecracy**



# BSN

